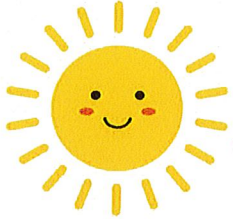


# PUBLIC SKATE



## at the Whitestown ICE RINK!

Public Skate ... **ADMISSION \$5 / SKATE RENTAL \$5** Skate N Shoot ... **\$10 per player. HELMETS and GLOVES REQUIRED. Sign in REQUIRED**



# JUNE

FOR MORE INFORMATION ON PRIVATE RENTALS OR SPECIAL EVENTS

**CALL 315-768-6047**

SUN

MON

TUE

WED

THU

FRI

SAT

	1	2	3 MORNING SKATE n SHOOT 10a-11:15a	4	5	6 SKATE n SHOOT 930a-1045a  PUBLIC SKATE 7-8:45pm
7 PUBLIC SKATE 1-2:45pm	8	9	10 MORNING SKATE n SHOOT 10a-11:15a	11	12	13 SKATE n SHOOT 930a-1045a  PUBLIC SKATE 7-8:45pm
14 PUBLIC SKATE 1-2:45pm	15	16	17 MORNING SKATE n SHOOT 10a-11:15a	18	19	20 SKATE n SHOOT 930a-1045a  PUBLIC SKATE 7-8:45pm
<i>Father's Day</i> 21 PUBLIC SKATE 1-2:45pm	22	23	24 MORNING SKATE n SHOOT 10a-11:15a	25	26	27 SKATE n SHOOT 930a-1045a  PUBLIC SKATE 7-8:45pm
28 PUBLIC SKATE 1-2:45pm	29	30	 <p>Ask about our PRIVATE PARTY packages! The "COOLEST" way to celebrate ....a SKATING PARTY! • Book a private skate with your family over the holidays. • Celebrate a birthday with friends on the ice. • Work outings • School Field Trips</p> <p><b>CALL 315-768-6047</b></p> <p>No outside food allowed, unless a party is scheduled through the Recreation office.</p>			

Like us on FACEBOOK...Whitestown Community Center and Ice Rink.